

## The Coleopterists Society

---

Observations on the Biology of *Amblycerus submaculatus* (Pic) and *Sennius bondari* (Pic) (Coleoptera: Bruchidae) in *Senna alata* (L.) Roxburgh (Caesalpinaceae)

Author(s): Cibele S. Ribeiro-Costa

Source: *The Coleopterists Bulletin*, Vol. 52, No. 1 (Mar., 1998), pp. 63-69

Published by: The Coleopterists Society

Stable URL: <http://www.jstor.org/stable/4009324>

Accessed: 23/10/2008 18:14

---

Your use of the JSTOR archive indicates your acceptance of JSTOR's Terms and Conditions of Use, available at <http://www.jstor.org/page/info/about/policies/terms.jsp>. JSTOR's Terms and Conditions of Use provides, in part, that unless you have obtained prior permission, you may not download an entire issue of a journal or multiple copies of articles, and you may use content in the JSTOR archive only for your personal, non-commercial use.

Please contact the publisher regarding any further use of this work. Publisher contact information may be obtained at <http://www.jstor.org/action/showPublisher?publisherCode=cole>.

Each copy of any part of a JSTOR transmission must contain the same copyright notice that appears on the screen or printed page of such transmission.

JSTOR is a not-for-profit organization founded in 1995 to build trusted digital archives for scholarship. We work with the scholarly community to preserve their work and the materials they rely upon, and to build a common research platform that promotes the discovery and use of these resources. For more information about JSTOR, please contact [support@jstor.org](mailto:support@jstor.org).



*The Coleopterists Society* is collaborating with JSTOR to digitize, preserve and extend access to *The Coleopterists Bulletin*.

<http://www.jstor.org>

**OBSERVATIONS ON THE BIOLOGY OF *AMBLYCERUS SUBMACULATUS* (PIC) AND *SENNIUS BONDARI* (PIC) (COLEOPTERA: BRUCHIDAE) IN *SENNA ALATA* (L.) ROXBURGH (CAESALPINACEAE)**

CIBELE S. RIBEIRO-COSTA  
Departamento de Zoologia  
Universidade Federal do Paraná  
Caixa Postal 19.020, 81.531-990  
Curitiba, Paraná, Brasil

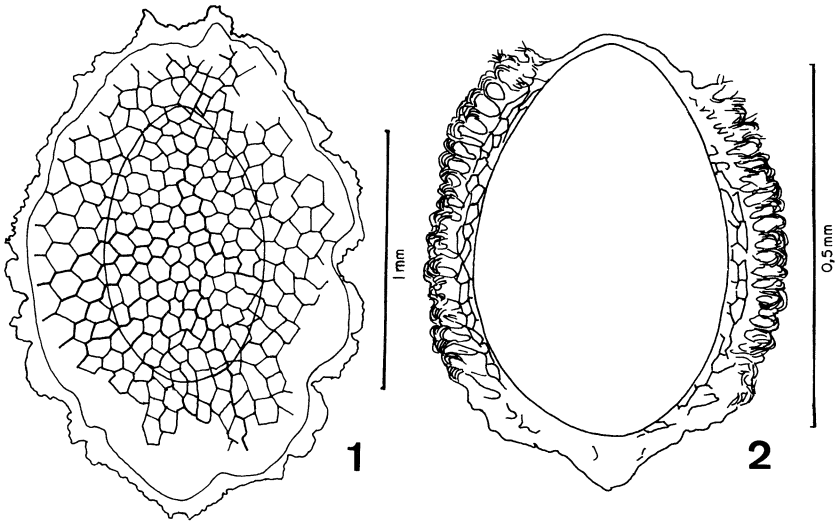
**Abstract**

Two species of Bruchidae, *Amblycerus submaculatus* (Pic) and *Sennius bondari* (Pic), are recorded for the first time preying upon the seeds of *Senna alata* (L.) Roxburgh (Caesalpinaceae). Biological aspects of these species in this host plant are presented. There is evidence that *Horismenus* sp. (Eulophidae) parasitize both bruchids. Specimens of *Acylomus* sp., a phalacrid beetle, were also found inside some seeds.

---

Mature pods of *Senna alata* (L.) Roxburgh (Caesalpinaceae) from Itaparica, Bahia, Brazil, were collected 1 March 1991. From this single lot, consisting of dried and some slightly opened pods with several seeds inside, adults of two species of Bruchidae species belonging to different subfamilies emerged: *Amblycerus submaculatus* (Pic) and *Sennius bondari* (Pic). *Amblycerus submaculatus* and an unidentified *Sennius* were reared from seeds of *Senna hirsuta* (L.) Irwin and Barneby, at the same time and in the same host plant, by Terán and Muruaga de L'Argentier (1981). According to Ribeiro-Costa (1992) this *Amblycerus* was erroneously identified as *A. hoffmanseggi* (Gyllenhal). Janzen (1980) reported *Amblycerus obscurus* (Sharp) and *Sennius instabilis* (Sharp) preying upon the seeds of *Senna alata*. The presence of different bruchid species in the same host plant is not a novelty since Bridwell (1918) registered up to ten bruchids species in one species of legume. It also would be expected since most Bruchidae select legumes as hosts (Johnson 1970).

The bruchid genus *Amblycerus* Thunberg occurs in 11 plant families (Southgate 1979). *Amblycerus submaculatus* has been recorded from *Senna* only: *S. occidentalis* (L.) Link, *S. hirsuta*, *S. obtusifolia* (L.) Irwin and Barneby and *S. bicapsularis* (L.) Roxburgh (Ribeiro-Costa 1992). The genus *Sennius* Bridwell is largely restricted to the genus *Senna* (Johnson 1984). This is confirmed by the recorded hosts found in literature for *Sennius bondari*: *Senna splendida* (Vog.) Irwin and Barneby, *S. multijuga* (Rich.) Irwin and Barneby, *S. occidentalis*, *S. surattensis* (L. L. Burman) Irwin and Barneby, *S. bicapsularis*, *S. pendula* (Willd.) var. *advena* (Vog.) Irwin and Barneby and *S. pistaciifolia* (H.B.K.) Irwin and Barneby (Silva et al. 1968; Johnson 1984; Macêdo, Lewinsohn and Kingsolver 1992). *Senna alata* is recorded here as host for *Amblycerus submaculatus* and *Sennius bondari* for the first time. Some observations about the biology of these species are reported below.



**Figs. 1, 2.** Egg structure. 1) *Amblycerus submaculatus*; 2) *Sennius bondari*.

*Amblycerus submaculatus* (Pic)

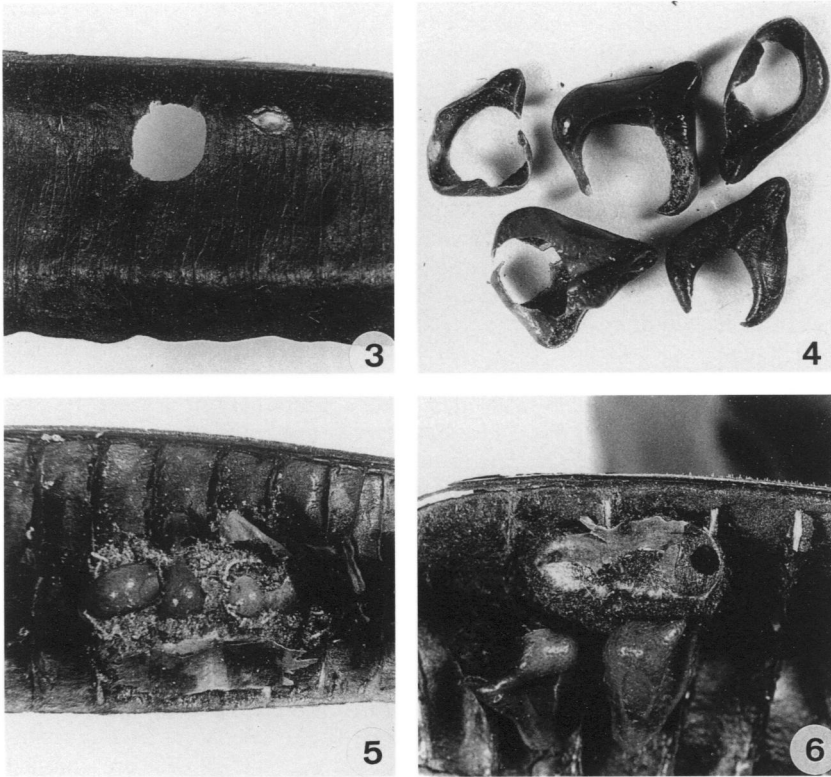
Figs. 1, 3–6

**Oviposition.** Eggs, from 0.08–1.17mm in length and from 0.50–0.67mm in width (Fig. 1), are deposited on the external surface of pods, probably before they start to ripen and dehisce (Fig. 3). This behavior of oviposition includes *A. submaculatus* in a list of bruchids belonging to Johnson's Guild A (Johnson 1981). The only species of *Amblycerus* known to deposit eggs directly on seeds is *Amblycerus longissimus* (Pic) (Bondar 1931, 1937). Only isolated eggs were observed, but in some other *Amblycerus* eggs may be clustered (Bondar 1931, 1937; Pfaffenberger 1979; Terán 1984; Ribeiro-Costa 1992).

The egg structure of *A. submaculatus* is similar to that described by Johnson and Kingsolver (1975) for *A. vitis* (Shaeffer) and by Pfaffenberger (1979) for *A. robiniae* (Fabricius). The egg is protected by a substance that forms a reticulate membrane (Fig. 1), ranging from 1.42–1.75mm in length and from 1.00–1.25mm in width. The membrane has a peripheral, adhesive flange which fixes the egg firmly to the surface. This egg type probably prevents the egg from becoming detached during the emergence of the first instar larva and it also keeps the egg glued to a smooth surface that later wrinkles and shrivels (Johnson and Kingsolver 1975).

The design observed in the egg membrane (Fig. 1) is shared by other species of *Amblycerus* (Bondar 1931, 1937; Pfaffenberger 1979; Terán and L'Argentier 1979; Terán 1984; Ribeiro-Costa 1992) except by *A. vitis*, where it is smooth (Johnson and Kingsolver 1975).

**Larval Development.** Eclosion occurs through the lower surface of the egg chorion. First instars penetrate into the fruit wall through a round hole (0.20 mm in diameter). Each larva feeds upon several seeds in the course of its development, apparently walking freely among septa of the fruit. Janzen (1980) observed the same behavior when a bruchid larva is much larger than a single seed. The only two species of *Amblycerus* species recorded in the literature



**Figs. 3–6.** *Amblycerus submaculatus*. 3) egg and an adult exit hole in pod valve; 4) destroyed seeds; 5) cocoon inside pod valves; 6) cocoon with adult exit hole of euphid parasite.

(Johnson and Kingsolver 1975) that develop within a single seed are *A. robiniae* (Fabricius) and *A. vitis*.

As the successive instars consume much of the seed coat and almost all of its contents (Fig. 4), the damage of *A. submaculatus* in seeds of *Senna alata* is readily discernible from that of *Sennius bondari* (Fig. 8).

**Pupation and Emergence.** The last-instar larva spins a cocoon made by silk aggregated with frass and sometimes with destroyed seeds (Figs. 5, 6). The cocoon is cemented internally in the pod valves, transversally to the septa. The construction of a silken cocoon is usual in *Amblycerus* (Johnson and Kingsolver 1971; Pfaffenberger 1979; Ribeiro-Costa 1992; Bondar 1931, 1937; Terán 1984) and rarely the pupal chamber is made only with frass and exuviae (Johnson and Kingsolver 1975; Terán and L'Argentier 1979). Pfaffenberger (1979) commented that the pupation of *A. robiniae* most generally occurs within seed remnants, eventually silken pupal chambers are also constructed when small seed fragments remained following larval feeding.

In pod valves the round exit hole of the adult ranges from 2.92–3.17mm in diameter (Fig. 3).

*Sennius bondari* (Pic)

Figs. 2, 7–10

**Oviposition.** The eggs, 0.48–0.56mm in length and 0.32mm in width (Fig. 2), are deposited directly onto the seed surface (Figs. 7, 10). This suggests that *S. bondari* attacks *Senna alata* after the *A. submaculatus* attack, when pod valves are opened and seeds exposed. This *S. bondari* behavior is similar to that of bruchids in Johnson's (1981) Guild B. Frequently only one egg is deposited on a single seed (Fig. 10) and when two or more eggs were observed only one adult emerged. The egg structure (Fig. 2) is similar to that described for *A. submaculatus*. A membrane, from 0.56–0.60 mm in length and 0.44–0.48 mm in width, covers and protects the egg. The reticulate areas of the membrane are restricted to the lateral borders of the egg chorion and the adhesive edge appears to be the area with many filaments (Fig. 2). The feature of the egg being covered by this membrane appears only to prevent the egg becoming detached from the seed during larva emergence.

**Larval Development.** The first instar burrows directly into the seed and in process pushes back whitish frass to the egg. The minute holes range from 0.12–0.16 mm in diameter. When more than one larva enters, only one adult emerges, suggesting that cannibalism occurs in *S. bondari*. The entire larval life is spent inside one seed (Fig. 7), although larvae of some species of *Sennius* consume several seeds (Center and Johnson 1973). The content is not completely destroyed by larval development as in *A. submaculatus* and, in most instances, the cotyledons are the preferable area consumed (Figs. 8, 9).

**Pupation and Emergence.** Pupation occurs inside one seed and the seed coat is conserved intact. This behavior is usual *Sennius* that consume only one seed during development (Center and Johnson 1973). The larval feeding chamber is a real pupal chamber where the amount of frass and exuviae are smashed (Fig. 9). There is no record of a cocoon being spun by species of *Sennius*.

Adults first emerged through round exit holes in the seed coats (1.04–1.32 mm in diameter) (Fig. 7) and afterward through the opened valves; no holes compatible with body circumference of *S. bondari* were found in the pod wall.

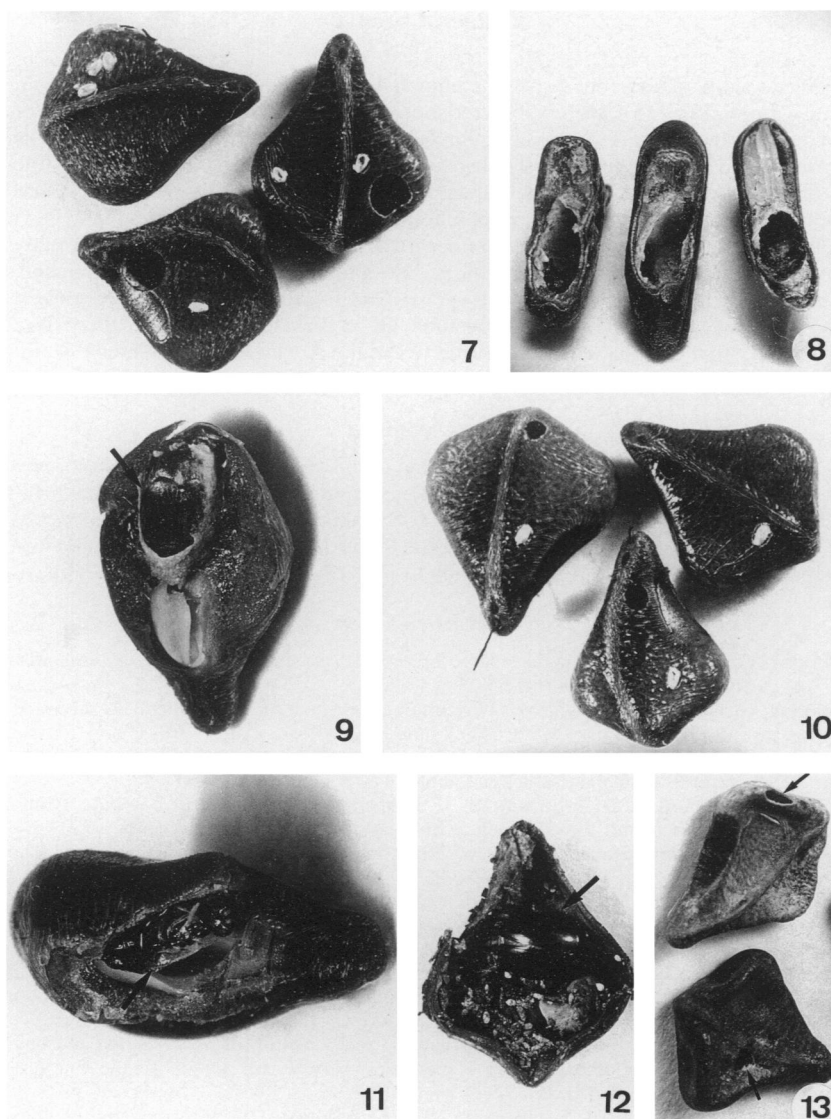
**Parasitism**

Figs. 6, 10, 11

Some silken cocoons of *A. submaculatus* had a round hole, about 0.83 mm in diameter (Fig. 6), smaller than the adult bruchid emergence hole (Fig. 3). These cocoons were dissected and inside them there were black exuviae of *Horismenus* sp. (Eulophidae) and larval exuviae of the bruchid. Ribeiro-Costa (1992) found exuviae of *Horismenus* sp. inside cocoons of *A. hoffmanseggi* and Terán (1984) found an unidentified parasite inside a cocoon of *A. testaceus* (Pic 1917).

Seeds with *S. bondari* eggs and no adult exit holes or even seeds with a hole 0.56–0.68 mm in diameter (Fig. 10), smaller than the adult body circumference of *S. bondari* (Fig. 7), were dissected. For this purpose seeds were soaked in water for about one day. Remains of black exuviae, and occasionally an adult *Horismenus* sp. were found inside many of the seeds (Fig. 11).

Janzen (1980) recorded in the same seed sample one parasite species being reared from many species of bruchids.



**Figs. 7–13.** Seeds of *Senna alata*. 7) seeds with *S. bondari* eggs and adult exit holes; 8) dissected seeds showing *S. bondari* damage; 9) dissected seed showing pupal chamber with newly emerged *S. bondari* adult; 10) seeds with *S. bondari* eggs and adult exit holes of eulophid parasite; 11) newly emerged eulophid adult; 12) dissected seed with *Acylomus* sp. adult inside and excrement left from larval development; 13) seeds where *Acylomus* sp. were found.

### Phalacrid beetles

Figs. 12, 13

Seeds with a different aspect, somewhat crumpled, yellowish, with mold and a hole (Fig. 13), were dissected before being soaked in water. Most of them contained single dead adult *Acylomus* sp. (Phalacridae) along with excrement and exuviae left from their larval development (Fig. 12). The possible explanation is that after the seed attack by *S. bondari*, fungi developed on and in the seed providing food for phalacrid larvae and adults. Steiner (1984) commented that species of *Acylomus* breed in dried legume pods previously infested by Lepidoptera and Bruchidae. No adults were observed in the seed. An interesting fact is that no endosperm was found in seeds with *Acylomus* sp. Since *S. bondari* does not consume all of the seed contents, there is a possibility that the phalacrids consume it. All the *Acylomus* discussed by Steiner (1984), however, feed on mold.

### Acknowledgments

I would like to thank Dr. Clarence Dan Johnson, Dr. Giovanni Mocelin, and Dr. Renato Marinoni for reading the manuscript, Dr. Gerdt G. Hatschbach for identifying the host plant, Dr. Albino M. Sakakibara for the photos and Ayres Menezes Jr. for identifying the parasite. This is contribution no. 998 from Departamento de Zoologia, Universidade Federal do Paraná, Curitiba, Brazil.

### Literature Cited

- Bondar, G. 1931.** Notas biológicas sobre bruquídeos brasileiros do gênero *Spermophagus*. *Correio Agrícola* 11(4):55–59.
- Bondar, G. 1937.** Notas biológicas sobre bruquídeos observados no Brasil. *Arquivos do Instituto de Biologia Vegetal* 3(1):7–44.
- Bridwell, J. C. 1918.** Notes on the Bruchidae and their parasites in the Hawaiian Islands. *Proceedings of the Hawaiian Entomological Society* 3:4365–505.
- Center, T. D., and C. D. Johnson. 1973.** Comparative life histories of *Sennius* (Coleoptera: Bruchidae). *Environmental Entomology* 2(4):669–672.
- Janzen, D. H. 1980.** Specificity of seed attacking beetles in a Costa Rican deciduous forest. *Journal of Ecology* 68:929–952.
- Johnson, C. D. 1970.** Biosystematics of the Arizona, California and Oregon species of the seed beetle genus *Acanthoscelides* Schilsky (Coleoptera: Bruchidae). *University of California Publications in Entomology* 59:1–116.
- Johnson, C. D. 1981.** Interactions between bruchid (Coleoptera) feeding guilds and behavioral patterns of pods of the Leguminosae. *Environmental Entomology* 10(2):249–253.
- Johnson, C. D. 1984.** *Sennius yucatan*, n.sp., a redescription of *S. infractus*, and new host records for other *Sennius* (Coleoptera: Bruchidae). *Annals of the Entomological Society of America* 77(1):56–64.
- Johnson, C. D., and J. M. Kingsolver. 1971.** Descriptions, life histories, and ecology of two new species of bruchid infesting guacima in Mexico. *Journal of the Kansas Entomological Society* 44(2):141–152.
- Johnson, C. D., and J. M. Kingsolver. 1975.** Ecology and redescription of the Arizona grape bruchid *Amblycerus vitis* (Coleoptera). *The Coleopterists Bulletin* 29(4):321–331.
- Macêdo, J. M., T. Lewinsohn and J. M. Kingsolver. 1992.** New host records of some bruchid species in Brazil with the description of a new species of *Caryedes* (Coleoptera: Bruchidae). *The Coleopterists Bulletin* 46(4):330–336.
- Pfaffenberger, G. S. 1979.** Comparative description and bionomics of the first and final larval stages of *Amblycerus acapulcensis* Kingsolver and *A. robiniae* (Fabricius) (Coleoptera: Bruchidae). *The Coleopterists Bulletin* 33(2):229–238.

- Pic, M. 1917.** Trois nouveaux *Spermophagus* Schoenh. (Col. Bruchidae). Bulletin of the Entomological Society of France 17:302.
- Ribeiro-Costa, C. S. 1992.** Gênero *Amblycerus* Thunberg, 1815 (Coleoptera: Bruchidae). Grupo "hoffmanseggi": II. Redescrições, chave e dados biológicos das espécies. Revista Brasileira de Entomologia 36(1):149–175.
- Silva, A. G., S. R. Gonçalves, M. Galvão, A. J. L. Gonçalves, J. Gomes, M. Silva, and L. Simoni. 1968.** Quarto catálogo dos insetos que vivem nas plantas do Brasil, seus parasitos e predadores. 1° tomo. Ministério da Agricultura, Laboratório Central de Patologia Vegetal, Rio de Janeiro, 622 pp.
- Southgate, J. B. 1979.** Biology of the Bruchidae. Annual Review of Entomology 24: 449–473.
- Steiner, W. E., Jr. 1984.** A review of the biology of the phalacrid beetles [pp. 424–445]. In: Fungus-Insect relationships, perspectives in Ecology and Evolution (Q. Wheeler and M. Blackwell, editors). Columbia University Press, New York. i–XIII+504pp.
- Terán, A. 1984.** Observaciones sobre Bruchidae (Coleoptera) del noroeste argentino. VI. Estudios morfológicos y biológicos de *Amblycerus testaceus*. Acta Zoologica Lilloana 37(2):207–217.
- Terán, A. and S. Muruaga de L'Argentier. 1979.** Observaciones sobre Bruchidae (Coleoptera) del noroeste argentino. II. Estudios morfológicos e biológicos de algunas espécies de Amblycerinae y Bruchinae. Acta Zoologica Lilloana 35(1): 435–474.
- Terán, A. and S. Muruaga de L'Argentier. 1981.** Observaciones sobre Bruchidae (Coleoptera) del noroeste argentino. IV Estudios morfológicos y biológicos de *Amblycerus hoffmanseggi* (Gyll.), *Acanthoscelides computus* Kingsolver y *Merobruchus bicoloripes* (Pic). Acta Zoologica Lilloana 36(2):61–84.

(Received 28 March 1997; accepted 30 June 1997)